



January 21, 2025 • Kona, Hawaii

Arrival
8:00AM

Tonight's Attire
Casual

Last Tender
5:30PM

Going Ashore

This morning we will be using tender boats to transport you from ship to shore. At our scheduled arrival time of 8:00am, we will be transporting guests booked on a Holland America Shore Excursion. Please be at the designated meeting place at the time listed on the ticket in your Navigator wallet.

All other guests must request a tender ticket to go ashore. Tickets will be available at 8:30am in B.B. King's Blues Club, 2. Please ensure your entire party is ready before collecting a tender ticket. As always, please remember to carry your stateroom keycard and a government issued photo ID ashore with you.

Hawaii General Excise Tax

Hawaiian regulations stipulate a General Excise Tax (GET) on all beverage, laundry, photo, and restaurant sales. While in Kona, an additional 4.712% GET will be added to these services.

Satellite Connectivity

During our cruise, there may be times where live TV signal is diminished or blocked due to the ship's position. In these instances, we will do our best to restore signal as quickly as possible and invite you to enjoy our complimentary on-demand movies or Audible Originals in the meantime.

Today's Highlights

Scenic Sail Away

5:30pm

Sea View Pool, 9

Join us for drink specials as we depart Kona.



Dance on Deck

9:00pm

Lido Poolside, 9

Join us for music and dancing poolside with Proship Dance Band.

NEW TODAY



TODAY'S ACTIVITIES & PROMOTIONS

7:00am	Walk a Mile	Grand Dutch Café, 3
7:30am	Abs Class	Fitness Center, 9
8:00am	Tai Chi for Everyone	Lido Poolside, 9
8:00am	Shopping Q&A with Lynda	Port Shopping, 3
8:00am	TRX Suspension Training \$20	Fitness Center, 9
8:00am	Kona Photo Opportunity until 11:00am PROMOTION	Gangway
8:00am	Collect Kona Shopping Cards PROMOTION	Port Shopping, 3
9:00am	Let's Play Cornhole	Sport Court, 11
9:30am	Dam Dots Challenge	Art Studio, 12
10:00am	Soccer Goal Scoring Competition	Sport Court, 11
10:30am	Origami Folding: Butterfly also at 4:30pm	Art Studio, 12
11:00am	Complimentary Massage Sampler PROMOTION	Greenhouse Spa, 9
12:00pm	Detox and Renew Your Body PROMOTION	Greenhouse Spa, 9
1:00pm	Today's Trivia: Sports	B.B. King's Blues Club, 2
1:00pm	Party Bridge Play until 4:00pm	Dining Room, 3
1:00pm	Mahjong Players Meet until 4:00pm	Game Room, 12
1:00pm	Healthy Hair Consultations PROMOTION	Greenhouse Spa, 9
2:00pm	Today's Movie: Super/Man: The Christopher Reeve Story	World Stage, 2 & 3
2:30pm	Friends of Bill W. Meet	Pinnacle Grill, 2
3:00pm	Shuffleboard Challenge	Sport Court, 11
4:00pm	Team Trivia Challenge	Billboard Onboard, 2
4:00pm	Let's Play Pickleball	Sport Court, 11
4:00pm	50% Off Happy Hour PROMOTION wine, beer and cocktails \$11 or less	Billboard Onboard, 2
4:30pm	Natural Relief for Arthritis, Back and Knee Pain PROMOTION	Greenhouse Spa, 9
5:00pm	Mass is Celebrated	B.B. King's Blues Club, 2
5:00pm	Have Your Casual Portrait Taken PROMOTION until 9:00pm	Atrium, 2
5:00pm	Martini Hour \$12 PROMOTION	Crow's Nest, 12
5:00pm	Non-Surgical Facelift PROMOTION	Greenhouse Spa, 9

5:30pm	●	Scenic Sail Away	Sea View Pool, 9
5:30pm	●	Coloring for Adults	Art Studio, 12
5:30pm	●	Evening Stretch	Fitness Center, 9
6:00pm		Koningsdam Departs Kona	
6:00pm	●	The Step One Dance Company: Musicology	World Stage, 2 & 3
6:00pm	●	Guess the Weight of the Sculpture until 9:00pm	Atrium, 2
6:45pm		Reverie Diamond Showcase & Sale PROMOTION	Effy Jewelry, 2
7:00pm	●	Music Trivia: Movies	B.B. King's Blues Club, 2
7:00pm		\$5 Charm of the Day PROMOTION	The Shops, 3
8:00pm	●	The Step One Dance Company: Musicology	World Stage, 2 & 3
8:00pm	●	Game Night: Can We Agree	Rolling Stone Lounge, 2
8:00pm		Oris Watch Showcase PROMOTION	The Shops, 2
9:00pm	●	Dance on Deck NEW TODAY with Proship Dance Band	Lido Poolside, 9
10:00pm	●	Proship Dance Band Play Lido Poolside until 10:45pm	Lido Poolside, 9
11:00pm	●	Over \$546,000 Paradise Lotto Jackpot Drawing	Casino, 3
11:59pm		Stay and Play Slots All Night	Casino, 3

LIVE MUSIC



The Best of B.B.
King's All-Stars
8:30pm

Memphis Nights
9:30pm

The Best of B.B.
King's All-Stars
10:30pm



Returns
Tomorrow



The 1960s
6:45pm

The 1970s
8:45pm

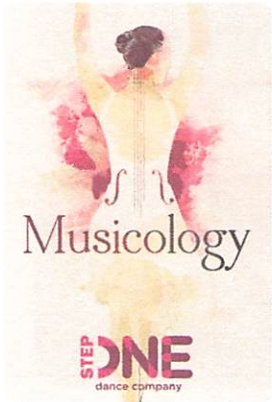
All Requests
9:45pm



Proship Dance
Band
4:00pm

TODAY ON **WORLD** STAGE

Decks 2 & 3, forward



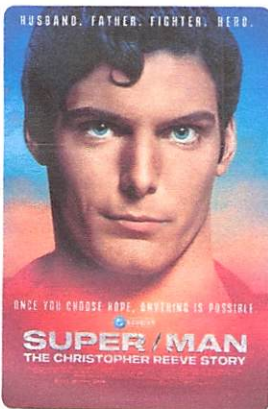
6:00pm & 8:00pm

The Step One Dance Company

Musicology

Sound and Dance Unite as the Orchestra Comes Alive.

TODAY'S MOVIE



2:00pm

World Stage, 2 & 3

Super/Man: The Christopher Reeve Story

Biography/Documentary, 1 hour 44 minutes, Rated PG-13
Reeve's rise to becoming a film star follows with a near-fatal horse-riding accident in 1995 that left him paralyzed from the neck down. After the accident, he became an activist for spinal cord injury treatments and disability rights.

DINING HIGHLIGHTS

Rudi's Sel de Mer

French Seafood Brasserie with a twist on timeless classics.

Dial 88 for reservations



Rijsttafel Dinner

Experience the flavors of Indonesia at this one-night only dinner on January 24th.

Dial 88 for reservations



TONIGHT IN THE DINING ROOM

Azteca Grilled Shrimp

chipotle pepper, scallion polenta, bell peppers

HOURS

Restaurants

Dining Room

Cruising Classics

7:30am - 9:00am

5:00pm - 9:00pm

Decks 2 & 3, aft

Canaletto \$

Fresh Italian Pasta

5:00pm - 9:30pm

Deck 9, mid-ship

Pinnacle Grill \$

Steak & Seafood

5:00pm - 9:30pm

Deck 2, mid-ship

Tamarind \$

Pan-Asian Cuisine

5:30pm - 9:30pm

Deck 10, aft

Nami Sushi \$

Sushi à la Carte

5:00pm - 9:30pm

Deck 10, aft

Rudi's Sel de Mer \$

French Seafood Brasserie

5:00pm - 9:30pm

Deck 2, mid-ship

New York Deli & Pizza

Bagels, Pizza & More

7:00am - 11:00am

11:30am - 11:30pm

Deck 10, mid-ship

Dive-In

Burgers & Hot Dogs

11:30am - 6:00pm

Deck 9, mid-ship

Lido Market

Casual Dining

6:30am - 10:00am

11:30am - 2:00pm

2:00pm - 4:00pm*

5:30pm - 8:00pm

10:30pm - 11:30pm*

Deck 9, mid-ship & aft

\$ cover charges apply * select stations available

DRINKS

Cafés & Bars *A full list of bar hours is available on Navigator*

Exploration's Café	6:30am - 8:00pm	Deck 12, forward
Gelato & Juice Bar	11:30am - 9:00pm	Deck 9, mid-ship
Grand Dutch Café	6:00am - 9:00pm	Deck 3, mid-ship
Lido Bar	7:30am - 9:30pm	Deck 9, mid-ship
Ocean Bar	10:00am - close	Deck 2, mid-ship

Guests ages 21+ are welcome to purchase and consume alcoholic beverages. Proper identification is required, and guests will be asked to verify their age.

Recreation

Casino	10:30pm - late <i>Cashier,</i> 10:30pm - late <i>Tables</i> 10:30pm - late <i>Slots</i>	Deck 3 forward
Fitness Center	6:00am - 9:00pm	Deck 9, forward
Hot Tubs	9:00am - 10:00pm	Deck 9
Kids Club	9:00am - 12:00pm 1:00pm - 4:00pm 7:00pm - 10:00pm	Deck 10, mid-ship
Pools	7:00am - 10:00pm <i>Lido</i> 7:00am - 10:00pm <i>Sea View</i>	Deck 9
Spa & Salon	8:00am - 10:00pm	Deck 9, forward

Services

Dining Reservations	24 hours - Dial 88	Deck 2, mid-ship
Future Cruises	8:00am - 11:00am	Deck 3, mid-ship
Guest Services	24 hours - Dial 90	Deck 3, mid-ship
Medical Center	8:00am - 10:00am 4:00pm - 6:00pm By appointment - Dial 99 Emergency - Dial 911	A Deck, forward
Room Service	24 hours - Dial 92	
Shore Excursions	3:00pm - 6:00pm	Deck 12, forward

Shopping

Art Gallery	6:00pm - 9:00pm	Deck 1, mid-ship
EFFY Jewelry	7:00pm - 10:00pm	Deck 2, mid-ship
Port Shopping	8:00am - 9:00am	Decks 3, mid-ship
Photo Shop	5:00pm - 9:30pm	Deck 3, aft
The Shops	7:00pm - 10:00pm	Decks 2 & 3, mid-ship