



# THE DAILY

Tuesday, May 5, 2026 • Juneau, Alaska

Happy Cinco de Mayo

**Arrival**  
1:00PM

**Tonight's Attire**  
Casual

**All Aboard**  
8:30PM

## Alaska's Capital

Juneau became the territorial capital of Alaska in 1906 and has been the state capital since January 3, 1959 when Alaska became the 49th state in the US. What makes Juneau even more unique is that there are no roads connecting it to the rest of Alaska or North America. The only way to get here is by air or by sea.

### Going Ashore in Juneau

We will be docking at Franklin Dock today. When going ashore, please remember to carry your stateroom keycard and a government issued photo ID.

### Alaska Local Sales Tax

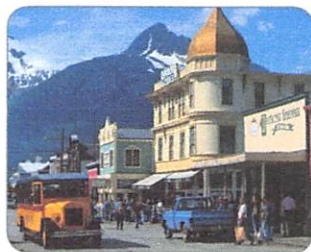
While in or approaching Alaskan ports, local sales tax will be applied as required on all beverage, laundry, restaurant, and photo sales. Sales tax percentages vary.

### Today's Highlights

#### Shop Like a Local in Juneau

10:30am *Hudson Room, 3*

Port Shopping Concierge Matthew shares how to get the best deals in town.



#### Tech for Travelers: When in Port

2:00pm *Explorer's Lounge, 2*

Apps to Enhance Your Time Ashore



## TODAY'S ACTIVITIES & PROMOTIONS

2:00am Ship's Clocks are Set 1 Hour Back

7:00am	🕒 Total Body Conditioning	Fitness Center, 9
7:30am	🕒 Pure Form Pilates \$20	Fitness Center, 9
8:00am	🕒 Tai Chi for Everyone	Lido Poolside, 9
8:00am	Crosswords & Number Puzzles are Available	Library, 3
8:00am	🕒 Morning Catholic Prayer (Led by the Congregation)	Hudson Room, 3
8:30am	🕒 Wildlife Spotting on Deck <b>WE♥ALASKA</b>	Seaview Pool, 9
8:30am	🕒 Body Sculpt Boot Camp \$20	Fitness Center, 9
9:00am	The Great Alaska Deck Sale <b>PROMOTION</b>	Lido Poolside, 9
9:00am	Dressy Night Photos on Display until 10:00pm	Photo Gallery, 3
9:00am	🕒 Coffee with Simon with F&B Director Melvyn	Explorer's Lounge, 2
9:00am	🕒 Pickleball Instruction: The Basics	Sports Court, 11
9:00am	🕒 Walk a Mile	Ocean Bar, 3
9:30am	Health Seminar: Improve Your Posture <b>PROMOTION</b>	Fitness Center, 9
9:30am	🕒 Coloring for Adults	Art Studio, 11
10:00am	The Art of Collecting <b>PROMOTION</b>	Explorer's Lounge, 2
10:00am	Mahjong Players Meet until 3:00pm	Half Moon Room, 3
10:00am	Party Bridge Play until 3:00pm	Stuyvesant Room, 3
10:00am	🕒 Learn to Line Dance	Ocean Bar, 3
10:00am	Natural Relief for Arthritis, Back & Knee Pain	Greenhouse Spa, 9
10:00am	Pickleball Tournament	Sports Court, 11
10:00am	🕒 Alaska Up Close: The Iditarod <b>WE♥ALASKA</b>	World Stage, 1, 2 & 3
10:00am	Guess the Weight of the Wyland Sculpture <b>PROMOTION</b>	Art Gallery, 2
10:30am	🕒 Shop Like a Local In Juneau	Hudson Room, 3
10:30am	🕒 Modern Calligraphy: Alphabet	Art Studio, 11
11:00am	Diamonds: Up to 50% Off <b>PROMOTION</b>	EFFY Jewelry
11:00am	The Bow is Open for Scenic Cruising <i>weather permitting*</i>	Bow, 5 forward
11:00am	🕒 Health Seminar: Burn Fat Faster	Fitness Center, 9
11:00am	🕒 30 Minute Art History	Explorer's Lounge, 2
11:00am	🕒 Collect VIP Shopping Card for Juneau	Port Shopping Desk, 1
11:30am	🕒 Origami Folding: Sailboat	Art Studio, 11
11:30am	Scenic Narration: Juneau <b>WE♥ALASKA</b>	Crow's Nest, 11
11:30am	🕒 Express Lunch	Lower Dining Room, 2
12:00pm	Juneau Photo Opportunity until 3:00PM <b>PROMOTION</b>	Gangway

🕒 30 min   🕒 45 min   🕒 1 hour

---

**1:00pm**      **Nieuw Amsterdam Arrives in Juneau**

---

1:00pm    ① Today's Trivia: Sports      *Billboard Onboard, 2*

1:00pm      Ping Pong Tournament      *Lido Poolside, 9*

1:00pm    ② Needlework Meetup      *Art Studio, 11*

1:00pm    ④ A Pickup Game of Pickleball      *Sports Court, 11*

1:00pm      Diminish Swollen Ankles & Fluid Retention      *Greenhouse Spa, 9*

2:00pm    ④ Tech for Travelers: When in Port      **NEW TODAY**      *Explorer's Lounge, 2*

2:00pm    ③ Complimentary Footprint Analysis      *Fitness Center, 9*

3:00pm    ① Let's Play Ladder Ball      *Shuffleboard Court, 10*

3:00pm      Today's Movie: The Ballad of Wallis Island      *Rolling Stone Lounge, 2*  
*Comedy, Rated PG-13, 1 hour 39 minutes*      **MOVIE**

3:30pm    ④ Friends of Bill W. Meet      *Half Moon Room, 3*

3:30pm    ④ Creating Doodle Designs      *Art Studio, 11*

4:00pm    ④ Shuffleboard Challenge      *Shuffleboard Court, 10*

4:00pm      Family Fun Time until 10:00pm      **FAMILY FUN**      *High Score, 10*

4:00pm    ① Team Trivia Challenge      *Billboard Onboard, 2*

4:00pm    ① Board Game Meetup      *Crow's Nest, 11*

4:00pm      50% Off Happy Hour on select drinks.      **PROMOTION**      *Ocean Bar, 3*

4:30pm    ④ Origami Folding: Frog      *Art Studio, 11*

6:00pm      Footprint and Posture Analysis      *Fitness Center, 9*

6:30pm      PRIDE Meetup      *Tamarind Bar, 11*  
For LGBTQ+ and friends

6:30pm    ④ Music Trivia: Rock n Roll      *Billboard Onboard, 2*

7:00pm    ③ Ask Your Travel Guide      *Crow's Nest, 11*

7:00pm      Complimentary Massage Sampler      **PROMOTION**      *Greenhouse Spa, 9*

7:30pm    ① Game Night: Dance Through the Decades      *Explorer's Lounge, 2*

7:30pm    ① Singles & Solo Travelers Meetup      *Crow's Nest, 11*

7:30pm    ④ Tonight's Show: Singer Anita Newby      *World Stage, 1, 2 & 3*

---

**8:30pm**      **All Aboard as Nieuw Amsterdam Departs Juneau**

---

9:00pm      Late Night Happy Hour      **PROMOTION**      *Tamarind Bar, 11*

9:00pm    ③ \$12 Martini Hour      *Pinnacle Bar, 2*

9:00pm    ④ Tonight's Show: Singer Anita Newby      *World Stage, 1, 2 & 3*

10:00pm      Burros & Bucks      **PROMOTION**      *Casino, 2*

11:00pm      \$625,000 Paradise Lotto Jackpot Drawing      *Casino, 2*

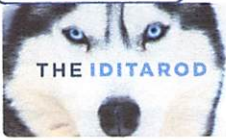
11:30pm      Stay and Play Slots All Night      *Casino, 2*

---

## TODAY ON WORLD STAGE *Decks 1, 2 & 3, forward*

10:00am

**WE ♥ ALASKA**



**Alaska Up Close:**

**The Iditarod**

The Last Great Race on Earth

7:30pm &  
9:00pm



**Tonight's Show:**

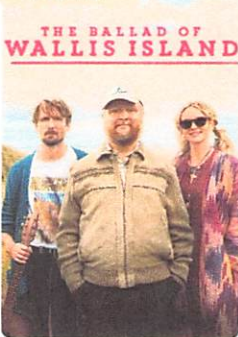
**Singer Anita Newby**

Anita Newby is a dynamic, well-rounded songstress whose soulful tones have enraptured audiences around the world. Known for her powerful and passionate performances, she is a vibrant and versatile vocalist with great range and electrifying energy.

## TODAY'S MOVIE *Rolling Stone Lounge, 2*

3:00pm

MOVIE



**The Ballad of Wallis Island**

Comedy, *Rated PG-13, 1 hour 39 minutes*

An eccentric lottery winner who lives alone on a remote island tries to make his fantasies come true by getting his favorite musicians to perform at his home.

## LIVE MUSIC

**Rolling Stone  
LOUNGE**

Legendary  
R&B

8:15pm

Rock n  
Blues 80's

9:15pm

West Coast  
Vibes

10:15pm

**billboard  
onboard**

The 1960s

7:45pm

Hot  
Country

9:30pm

All  
Requests

10:30pm

**OCEAN  
BAR**

**Solo Guitarist Paige**

4:00pm

5:00pm

8:15pm

**Explorer's Lounge**

**Vivace**

4:15pm

6:30pm

8:30pm

## DINING HIGHLIGHTS

### Canaletto 🇺🇸

5:00pm - 9:30pm *Deck 9, mid-ship*

Authentic Italian cuisine featuring fresh pasta made daily



### Express Lunch in the Dining Room

11:30am - 12:30pm *Lower Dining Room, 2*

Enjoy an express lunch of fish & ships before heading ashore



## TONIGHT IN THE DINING ROOM

**TASTE**  
ALASKA

Smoked Juniper Berries Cured Bison  
celeriac remoulade

Grilled Fresh Rockfish Oaxacan Style  
tomato rice, mango salsa

## HOURS

### Restaurants

#### Dining Room

Cruising Classics  
8:00am - 9:30am  
11:30am - 12:30pm  
5:00pm - 9:00pm  
*Decks 2 & 3, aft*

#### Canaletto 🇺🇸

Fresh Italian Pasta  
5:00pm - 9:30pm  
*Deck 9, mid-ship*

#### Pinnacle Grill 🇺🇸

Regional Fresh Fish, Steak & Seafood  
5:00pm - 9:30pm  
*Deck 2, mid-ship*

#### Tamarind 🇺🇸

Pan-Asian Cuisine  
5:00pm - 9:30pm  
*Deck 11, mid-ship*

#### Morimoto by Sea 🇺🇸

Sushi Bar  
5:00pm - 9:30pm  
*Deck 11, mid-ship*

#### Lido Market

Casual Dining  
7:00am - 10:30am  
11:30am - 2:00pm  
2:00pm - 4:00pm\*  
5:30pm - 8:00pm  
10:00pm - 11:30pm\*  
*Deck 9, mid-ship & aft*

#### New York Pizza

Hand-made Pizzas  
11:30am - 12:00am  
*Deck 9, aft*

#### Dive-In

Burgers & Hot Dogs  
11:30am - 6:00pm  
*Deck 9, mid-ship*

🇺🇸 cover charges apply \* select stations available



The artwork featured on our program and Dining Room menus was created by Rico Worl, a Tlingit/Athabaskan designer. He is the founder of Trickster Company which strives to promote innovative indigenous design.

## HOURS

### Cafés & Bars *A full list of bar hours is available on Navigator*

Crow's Nest Bar	6:00am - 10:00pm	Deck 11, forward
Lido Bar	7:00am - 9:00pm	Deck 9, mid-ship
Ocean Bar	10:00am - Close	Deck 3, mid-ship
Pinnacle Bar	5:00pm - 10:00pm	Deck 2, mid-ship

50% Off Happy Hour: All wine, beer and cocktails priced at \$12 or less.

4:00pm - 5:00pm - Ocean Bar, 3

9:00pm - 10:00pm - Tamarind Bar, 11

Guests ages 21+ are welcome to purchase and consume alcoholic beverages.

Proper identification is required, and guests will be asked to verify their age.

### Recreation

Casino	9:30am - 11:30am <i>Cashier</i> 10:00am - 11:30am <i>Tables</i> Open till 11:30am <i>Slots</i> <i>*Casino re-opens at 10:00pm</i>	Deck 2, forward
Fitness Center	6:00am - 9:00pm	Deck 9, forward
Hot Tubs	9:00am - 10:00pm	Deck 9
Pools	7:00am - 10:00pm 7:00am - 10:00pm	Deck 9, mid-ship Deck 9, aft
Spa & Salon	8:00am - 10:00pm	Deck 9, forward
High Score	4:00pm - 10:00pm	Deck 10, mid-ship

### Services

Dining Reservations	24 hours - Dial 88	Deck 2, mid-ship
Future Cruises	8:00am - 12:00am (No Appt.) 4:00pm - 7:00pm (By Appt.)	Deck 1, mid-ship
Guest Services	24 hours - Dial 90	Deck 1, mid-ship
Medical Center	8:00am - 10:00am 4:00pm - 6:00pm Dial 911 for emergencies.	A Deck, forward
Room Service	24 hours - Dial 92	
Shore Excursions	9:00am - 12:00pm	Deck 11, forward
Travel Guide Desk	4:00pm - 5:00pm	Deck 11, forward

### Shopping

Art Gallery	10:00am - 1:00pm	Deck 2, mid-ship
EFFY Jewelry	9:00am - 12:00pm	Deck 3, mid-ship
Photo Shop	9:00am - 1:00pm & 5:00pm - 10:00pm	Deck 3, aft
The Shops	9:00am - 12:00pm	Deck 3, mid-ship
Port & Shopping Desk	11:00am - 12:00pm	Deck 1, mid-ship