



THE DAILY

Thursday, May 14, 2026 • Ketchikan, Alaska

Arrival
8:00AM

Tonight's Attire
Casual

All Aboard
6:30PM

Where the Salmon Run

Known as the Salmon Capital of the World, Ketchikan sees an impressive number of salmon return to their waters each year. From mid-July to mid-September, you'll find all five species of North American Pacific salmon filling Ketchikan Creek, fighting their way upstream to spawn.

Going Ashore in Ketchikan

When going ashore, please remember to carry your stateroom keycard and a government issued photo ID.

Alaska Local Sales Tax

While in or approaching Alaskan ports, local sales tax will be applied as required on all beverage, laundry, restaurant, and photo sales. Sales tax percentages vary.

Today's Highlights

Scenic Cruising: Ketchikan

6:30am *Crow's Nest, 11*

With commentary by Wildlife Guide Dominic & Travel Guide Nyron.



Cocktails with Simon

6:00pm *Rolling Stone Lounge, 2*

featuring The World Stage Cast.



Game Show: Call My Bluff

8:15pm *Rolling Stone Lounge, 2*

Can you tell who's telling the truth?



TODAY'S ACTIVITIES & PROMOTIONS

6:30am	● Scenic Commentary: Ketchikan	WE♥ALASKA	Crow's Nest, 11
7:00am	The Bow is Open for Scenic Cruising <i>weather permitting*</i>	WE♥ALASKA	Bow, 5 forward
7:00am	Sunrise Stretch	PROMOTION	Fitness Center, 9
7:30am	● Pure Form Yoga \$20		Fitness Center, 9
8:00am	Nieuw Amsterdam Arrives in Ketchikan		
8:00am	Ketchikan Photo Opportunity until 11:00AM	PROMOTION	Gangway, 1
8:00am	● Tai Chi for Everyone		Rolling Stone Lounge, 2
8:00am	Crosswords & Number Puzzles Available		Library, 3
9:00am	● Let's Play Cornhole		Shuffleboard Court, 10
9:00am	● Walk A Mile		Ocean Bar, 3
9:30am	● Coloring for Adults		Art Studio, 11
10:00am	● Complimentary Massage Sampler	PROMOTION	Greenhouse Spa, 9
10:00am	Mahjong Players Meet until 3:00pm		Half Moon Room, 3
10:00am	Party Bridge Play until 3:00pm		Stuyvesant Room, 3
10:00am	● Ping Pong Tournament	NEW TODAY	Lido Pool, 9
10:30am	● Creating Doodle Designs		Art Studio, 11
11:00am	● Jigsaw Puzzle Meetup		Crow's Nest, 11
11:00am	Complimentary Skin Care Consultations		Greenhouse Spa, 9
11:00am	● Health Seminar: Improve Your Posture		Fitness Center, 9
11:30am	● Origami Folding: Seahorse		Art Studio, 11
1:00pm	● Today's Trivia: Riddles		Billboard Onboard, 2
1:00pm	● A Pickup Game of Pickleball		Sports Court, 11
1:00pm	● Needlework Meetup		Art Studio, 11
3:00pm	Today's Movie: The Friend Comedy, Rated R, 1 hour 59 minutes	MOVIE	Rolling Stone Lounge, 2
3:00pm	● Basketball Knockout		Sports Court, 11
3:30pm	● Origami Folding: Waterlily		Art Studio, 11
3:30pm	● Friends of Bill W. Meet		Half Moon Room, 3
4:00pm	Introduction to Signature Studio	PROMOTION	Photo Gallery, 3
4:00pm	50% Off Happy Hour on select drinks.	PROMOTION	Ocean Bar, 3
4:00pm	Family Fun Time until 10:00pm	FAMILY FUN	High Score, 2
4:00pm	● Let's Play Cornhole		Shuffleboard Court, 10
4:00pm	● Board Game Meetup		Crow's Nest, 11

4:00pm	🕒 Team Trivia Challenge	Billboard Onboard, 2
4:30pm	Iris Photography PROMOTION	Photo Gallery, 3
4:30pm	🕒 Modern Calligraphy: Postcard	Art Studio, 11
4:45pm	🕒 Evening Catholic Prayer	Hudson Room, 3
5:00pm	Have Your Casual Portraits Taken PROMOTION	Deck 2
5:00pm	All Cruise Photos are On display until 10:00pm	Photo Gallery, 3
5:00pm	🕒 Total Body Conditioning	Fitness Center, 9
5:30pm	🕒 Footprint and Posture Analysis	Fitness Center, 9
6:00pm	Guess the Weight of the Wyland Sculpture! PROMOTION	Art Gallery, 2
6:00pm	Masters on Metal Exhibition & Sale	Art Gallery, 2
6:00pm	🕒 Cocktails with Simon featuring The World Stage Cast	Rolling Stone Lounge, 2
6:00pm	Complimentary Massage Sampler PROMOTION	Greenhouse Spa, 9
6:30pm	All Aboard as Nieuw Amsterdam Departs Ketchikan	
6:30pm	🕒 Music Trivia: Animals	Billboard Onboard, 2
6:30pm	Natural Relief for Arthritis, Back and Knee Pain	Greenhouse Spa, 9
6:30pm	🕒 PRIDE Meetup	Tamarind Bar, 11
7:00pm	🕒 Ask Your Travel Guide WE♥ALASKA	Crow's Nest, 11
7:00pm	Complimentary Walk-In Medi-Spa Clinic PROMOTION	Greenhouse Spa, 9
7:00pm	Port and Cognac Flight \$29	Crow's Nest, 11
7:30pm	Art Scavenger Hunt	Art Gallery, 2
7:30pm	🕒 Game Night: Don't Look Now	Rolling Stone Lounge, 2
7:30pm	🕒 Singles & Solo Travelers Meetup	Crow's Nest, 11
7:30pm	🕒 Tonight's Show: The Comedy of Jeff Burghart	World Stage, 1, 2 & 3
8:00pm	Scratch Off Tickets on Sale PROMOTION	Casino, 2
8:15pm	🕒 Game Show: Call my Bluff NEW TODAY	Rolling Stone Lounge, 2
9:00pm	Late Night Happy Hour PROMOTION	Tamarind Bar, 11
9:00pm	🕒 Tonight's Show: The Comedy of Jeff Burghart	World Stage, 1, 2 & 3
9:00pm	🕒 \$12 Martini Hour	Pinnacle Bar, 2
9:30pm	🕒 It's Karaoke Time!	Rolling Stone Lounge, 2
10:30pm	🕒 Dance to the Hits: ABBA	Rolling Stone Lounge, 2
11:00pm	🕒 \$626,000 Paradise Lotto Jackpot Drawing	Casino, 2

TODAY ON WORLD STAGE *Decks 1, 2 & 3, forward*

7:30pm &
9:00pm

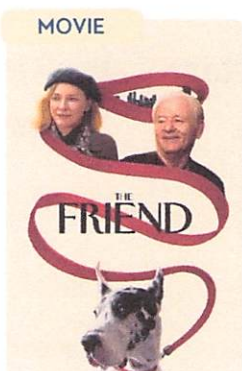


The Comedy of Jeff Burghart

Jeff Burghart possesses the rare capacity to captivate a crowd in seconds with his signature blend of celebrity impressions, original characters and acerbic wit. With a style that is distinctively his, Jeff delivers a hilarious combination of energy, observation, and satire with a physical approach that is truly indelible.

TODAY'S MOVIE *Rolling Stone Lounge, 2*

3:00pm



Today's Movie: The Friend

Comedy, Rated R, 1 hour 59 minutes

When a solitary writer adopts and bonds with a Great Dane that belonged to a late friend, she begins to come to terms with her past and her own creative inner life.

LIVE MUSIC

Rolling Stone LOUNGE

It's Karaoke Time!

Dance to the Hits:
ABBA

9:30pm

10:30pm

billboard onboard

Great
Standards

British
Invasion

All Requests
with Amanda

7:45pm

8:45pm

9:45pm

OCEAN BAR

The DAM Band Plays

4:00pm

5:00pm

8:15pm

Explorer's Lounge

Vivace Strings Play

4:15pm

6:30pm

8:30pm

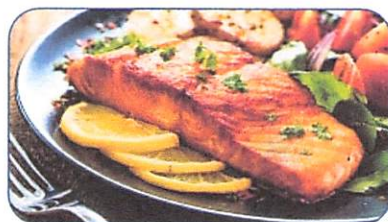
DINING HIGHLIGHTS

Salmon Bake Themed Dinner

5:30pm - 8:00pm

Lido Market, 9

Join us for this special themed dinner.



Morimoto by Sea Sushi Bar

5:00pm - 9:30pm

Deck 11, mid-ship

Contemporary Asian cuisine with a focus on fresh fish, created by Iron Chef Masaharu Morimoto



TONIGHT IN THE DINING ROOM

TASTE
ALASKA

Alaskan Steak and Beet Tartare

quail egg, capers, gherkins

HOURS

Restaurants

Dining Room

Cruising Classics

7:30am - 9:00am

5:00pm - 9:00pm

Decks 2 & 3, aft

Canaletto

Fresh Italian Pasta

5:00pm - 9:30pm

Deck 9, mid-ship

Pinnacle Grill

Regional Fresh Fish, Steak & Seafood

5:00pm - 9:30pm

Deck 2, mid-ship

Tamarind

Pan-Asian Cuisine

5:00pm - 9:30pm

Deck 11, mid-ship

Morimoto by Sea

Sushi Bar

5:00pm - 9:30pm

Deck 11, mid-ship

Lido Market

Casual Dining

6:30am - 10:00am

11:30am - 2:00pm

2:00pm - 4:00pm*

5:30pm - 8:00pm

10:30pm - 11:30pm*

Deck 9, mid-ship & aft

New York Pizza

Hand-made Pizzas

11:30am - 12:00am

Deck 9, aft

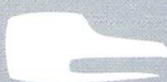
Dive-In

Burgers & Hot Dogs

11:30am - 6:00pm

Deck 9, mid-ship

\$ cover charges apply * select stations available



The artwork featured on our program and Dining Room menus was created by Rico Worl, a Tlingit/Athabascan designer. He is the founder of Trickster Company which strives to promote innovative indigenous design.

HOURS

Cafés & Bars *A full list of bar hours is available on Navigator*

Crow's Nest Bar	6:00am - 10:00pm	Deck 11, forward
Lido Bar	7:00am - 9:00pm	Deck 9, mid-ship
Ocean Bar	10:00am - Close	Deck 3, mid-ship
Pinnacle Bar	5:00pm - 10:00pm	Deck 2, mid-ship

50% Off Happy Hour: All wine, beer and cocktails priced at \$12 or less.

4:00pm - 5:00pm - Ocean Bar, 3

9:00pm - 10:00pm - Tamarind Bar, 11

Guests ages 21+ are welcome to purchase and consume alcoholic beverages.

Proper identification is required, and guests will be asked to verify their age.

Recreation

Casino	7:30pm - Late <i>Cashier</i> 7:30pm - Late <i>Tables</i> 7:30pm - Late <i>Slots</i>	Deck 2, forward
Fitness Center	6:00am - 9:00pm	Deck 9, forward
Hot Tubs	9:00am - 10:00pm	Deck 9
Pools	7:00am - 10:00pm 7:00am - 10:00pm	Deck 9, mid-ship Deck 9, aft
Spa & Salon	8:00am - 10:00pm	Deck 9, forward
High Score	4:00pm - 10:00pm	Deck 10, mid-ship

Services

Dining Reservations	24 hours - Dial 88	Deck 2, mid-ship
Future Cruises	8:00am - 10:00am (No Appt.) 4:00pm - 8:00pm (By Appt.)	Deck 1, mid-ship
Guest Services	24 hours - Dial 90	Deck 1, mid-ship
Medical Center	8:00am - 10:00am 4:00pm - 6:00pm Dial 911 for emergencies.	A Deck, forward
Room Service	24 hours - Dial 92	
Shore Excursions	4:00pm - 6:00pm	Deck 11, forward
Travel Guide Desk	7:00pm - 8:00pm	Deck 11, forward

Shopping

Art Gallery	6:00pm - 9:00pm	Deck 2, mid-ship
EFFY Jewelry	Closed	Deck 3, mid-ship
Photo Shop	4:00pm - 10:00pm	Deck 3, aft
The Shops	Closed	Deck 3, mid-ship
Port & Shopping Desk	Closed	Deck 1, mid-ship