



# THE DAILY

Friday, May 15, 2026 • Prince Rupert, British Columbia

**Arrival**  
7:00AM

**Tonight's Attire**  
Dressy

**All Aboard**  
4:30PM

## Going Ashore in Prince Rupert

When going ashore, please remember to carry your stateroom keycard and a government issued photo ID.

## Limited Bar Service

While in or approaching Alaskan ports, local sales tax will be applied as required on all beverage, laundry, restaurant, and photo sales. Sales tax percentages vary.

## Today's Highlights

### Tai Chi for Everyone

8:00am

*Rolling Stone Lounge, 2*

Gentle exercise to get moving.



### Game Night: Tone Deaf Ditty

7:30pm

*Billboard Onboard, 2*

Can you guess the song without the melody?



### Chocolate Surprise

9:45pm

*Deck 2*

If we said any more, it wouldn't be a surprise!



## TODAY'S ACTIVITIES & PROMOTIONS

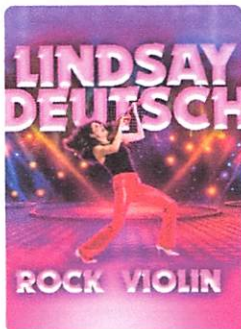
2:00am	Ship's Clocks are Set 1 Hour Forward	
6:00am	The Bow is Open for Scenic Cruising <b>WE ♥ ALASKA</b> Bow, 5 forward weather permitting*	
7:00am	Nieuw Amsterdam Arrives in Prince Rupert	
7:00am	Prince Rupert Photo Opportunity until 11:00AM	Gangway, 1
7:00am	🕒 ABS Class <b>PROMOTION</b>	Fitness Center, 9
8:00am	🕒 Tai Chi for Everyone	Rolling Stone Lounge, 2
8:00am	Crosswords & Number Puzzles Available	Library, 3
8:30am	🕒 Body Sculpt Bootcamp \$20	Fitness Center, 9
9:00am	🕒 Walk A Mile	Ocean Bar, 3
9:00am	🕒 Sjoelen Tournament	Lido Pool, 9
9:30am	🕒 Coloring for Adults	Art Studio, 11
10:00am	Party Bridge Play until 3:00pm	Stuyvesant Room, 3
10:00am	Mahjong Players Meet until 3:00pm	Half Moon Room, 3
10:00am	🕒 Shuffleboard Challenge	Shuffleboard Court, 10
10:30am	🕒 Modern Calligraphy: Alphabet	Art Studio, 11
11:00am	🕒 Jigsaw Puzzle Meetup	Crow's Nest, 11
11:30am	🕒 Creating Doodle Designs	Art Studio, 11
12:30pm	🕒 Complimentary Skin Care Consultations	Greenhouse Spa, 9
1:00pm	🕒 Today's Trivia: Art	Billboard Onboard, 2
1:00pm	🕒 A Pickup Game of Pickleball	Sports Court, 11
1:00pm	🕒 Needlework Meetup	Art Studio, 11
2:30pm	Healthy Hair Consultations <b>PROMOTION</b>	Greenhouse Spa, 9
3:00pm	🕒 Ping Pong Tournament	Lido Pool, 9
3:00pm	Today's Movie: Relay Drama/Thriller, Rated R, 1 hour 52 minutes	Rolling Stone Lounge, 2
3:30pm	🕒 Modern Calligraphy: Card	Art Studio, 11
3:30pm	Friends of Bill W. Meet	Half Moon Room, 3
4:00pm	Introduction to Signature Studio <b>PROMOTION</b>	Photo Gallery, 3
4:00pm	Family Fun Time until 10:00pm <b>FAMILY FUN</b>	High Score, 10
4:00pm	🕒 Board Game Meetup	Crow's Nest, 11
4:00pm	🕒 Let's Play Cornhole	Shuffleboard Court, 10
4:00pm	🕒 Team Trivia Challenge	Billboard Onboard, 2
4:00pm	Health Seminar: Walk in Comfort	Fitness Center, 9
4:00pm	50% Off Happy Hour on select drinks <b>PROMOTION</b>	Ocean Bar, 3

🕒 30 min   🕒 45 min   🕒 1 hour

4:30pm	All Aboard as Nieuw Amsterdam Departs Prince Rupert	
4:30pm	Origami Folding: Lovebird	Art Studio, 11
4:30pm	Iris Photography	PROMOTION Photo Gallery, 3
4:30pm	Dressy Night Portrait Studios until 10:00pm	PROMOTION Deck 3
4:30pm	🕒 Diabetes, Weight Loss and Chinese Herbs	Greenhouse Spa, 9
4:30pm	Dressy Night Portrait Studios until 10:00pm	PROMOTION Deck 2
4:45pm	🕒 Evening Catholic Prayer	Hudson Room, 3
5:00pm	Old And Modern Masters Exhibition & Sale	Art Gallery, 2
5:00pm	All Cruise Photos are On display until 10:00pm	Photo Gallery, 3
5:00pm	🕒 Wildlife Spotting on Deck	WE♥ALASKA Sea View Poolside, 9
5:00pm	Guess the Weight of the Wyland Sculpture	PROMOTION Art Gallery, 2
5:00pm	Shopping Q&A with Kris	Port Shopping Desk, 1
5:00pm	🕒 Secrets to Tighter, Smoother Looking Skin	Greenhouse Spa, 9
5:00pm	🕒 Total Body Conditioning	Fitness Center, 9
5:30pm	Footprint and Posture Analysis	PROMOTION Fitness Center, 9
6:30pm	🕒 Music Trivia: Love Songs	Billboard Onboard, 2
6:30pm	Ladies Sip & Save	EFFY Jewelry, 3
6:30pm	🕒 PRIDE Meetup	Tamarind Bar, 11
7:00pm	Ask Your Travel Guide	WE♥ALASKA Crow's Nest, 11
7:00pm	Inch Of Gold Event	PROMOTION The Shops, 3
7:00pm	Complimentary Massage Sampler	PROMOTION Greenhouse Spa, 9
7:30pm	🕒 Shabbat Service	Stuyvesant Room, 3
7:30pm	🕒 Game Night: Tone Deaf Ditty	Billboard Onboard, 2
7:30pm	🕒 Tonight's Show: Violinist Lindsay Deutsch	World Stage, 1, 2 & 3
7:30pm	🕒 Singles & Solo Travelers Meetup	Crow's Nest, 11
8:00pm	Scratch Off Tickets on Sale	Casino, 2
9:00pm	Late Night Happy Hour	PROMOTION Tamarind Bar, 11
9:00pm	🕒 Tonight's Show: Violinist Lindsay Deutsch	World Stage, 1, 2 & 3
9:00pm	\$12 Martini Hour	Pinnacle Bar, 2
9:45pm	🕒 Chocolate Surprise	NEW TODAY Deck 2
11:00pm	🕒 \$626,000 Paradise Lotto Jackpot Drawing	Casino, 2
11:30pm	Stay and Play Slots All Night	Casino, 2

## TODAY ON WORLD STAGE *Decks 1, 2 & 3, forward*

7:30pm &  
9:00pm



**Tonight's Show:**

**Violinist Lindsay Deutsch**

Join genre-smashing violinist Lindsay Deutsch, for an evening where Rock and Bach collide. Don't miss this opportunity to hear the tunes you have loved for a lifetime, infused with new energy, emotion, and passion.

## TODAY'S MOVIE *Rolling Stone Lounge, 2*

3:00pm



**Today's Movie: Relay**

Drama/Thriller, Rated R, 1 hour 52 minutes

A broker of lucrative payoffs between corrupt corporations and the individuals who threaten them breaks his own rules when a new client seeks his protection to stay alive.

## LIVE MUSIC

**RollingStone**  
LOUNGE

Rock Classics	70's Sound	Down Home Country
------------------	---------------	----------------------

8:15pm	9:15pm	10:15pm
--------	--------	---------

**billboard**  
onboard

**Solo Guitarist Paige Plays**

9:15pm	10:15pm
--------	---------

**OCEAN**  
BAR

**Solo Guitarist Paige Plays**

4:00pm

**Explorer's Lounge**

**Vivace Strings Play**

4:15pm	6:30pm	8:30pm
--------	--------	--------

## DINING HIGHLIGHTS

### Pinnacle Grill 🍷

5:00pm - 9:30pm *Deck 11, mid-ship*

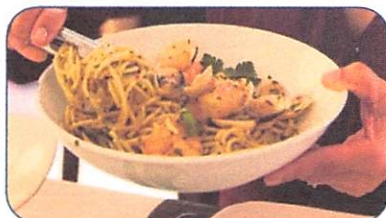
Enjoy perfectly prepared fresh fish, steak and seafood alongside regional dishes inspired by your destination. *Dial 88 for reservations*



### Canaletto 🍷

5:00pm - 9:30pm *Deck 9, mid-ship*

Authentic Italian cuisine featuring fresh pasta made daily. *Dial 88 for reservations*



## TONIGHT IN THE DINING ROOM

**TASTE**  
**ALASKA** **Parmesan-Crusted Sea Bass**  
carrots, asparagus, pearl onions, Beurre Blanc

## HOURS

### Restaurants

#### Dining Room 🍷

Cruising Classics  
7:30am - 9:00am  
5:00pm - 9:00pm  
*Decks 2 & 3, aft*

#### Canaletto 🍷

Fresh Italian Pasta  
5:00pm - 9:30pm  
*Deck 9, mid-ship*

#### Pinnacle Grill 🍷

Regional Fresh Fish, Steak & Seafood  
5:00pm - 9:30pm  
*Deck 2, mid-ship*

#### Tamarind 🍷

Pan-Asian Cuisine  
5:00pm - 9:30pm  
*Deck 11, mid-ship*

#### Morimoto by Sea 🍷

Sushi Bar  
5:00pm - 9:30pm  
*Deck 11, mid-ship*

#### Lido Market

Casual Dining  
6:00am - 10:00am  
11:30am - 2:00pm  
2:00pm - 4:00pm\*  
5:30pm - 8:00pm  
10:30pm - 11:30pm\*  
*Deck 9, mid-ship & aft*

#### New York Pizza

Hand-made Pizzas  
11:30am - 12:00am  
*Deck 9, aft*

#### Dive-In

Burgers & Hot Dogs  
11:30am - 6:00pm  
*Deck 9, mid-ship*

🍷 cover charges apply    \* select stations available

The artwork featured on our program and Dining Room menus was created by Rico Worl, a Tlingit/Athabascan designer. He is the founder of Trickster Company which strives to promote innovative indigenous design.

## HOURS

### Cafés & Bars *A full list of bar hours is available on Navigator*

Crow's Nest	6:00am - 4:00pm	Deck 11, forward
Lido Bar	6:30am - 10:00pm	Deck 9, mid-ship
Seaview Bar	7:00am - 4:00pm	Deck 9, aft
Ocean Bar	10:00am - Close	Deck 3, mid-ship

50% Off Happy Hour: All wine, beer and cocktails priced at \$12 or less.

4:00pm - 5:00pm - Ocean Bar, 3

9:00pm - 10:00pm - Tamarind Bar, 11

Guests ages 21+ are welcome to purchase and consume alcoholic beverages.

Proper identification is required, and guests will be asked to verify their age.

### Recreation

Casino	6:30pm - Late <i>Cashier</i> 6:30pm - Late <i>Tables</i> 6:30pm - Late <i>Slots</i>	Deck 2, forward
Fitness Center	6:00am - 9:00pm	Deck 9, forward
Hot Tubs	9:00am - 10:00pm	Deck 9
Pools	7:00am - 10:00pm 7:00am - 10:00pm	Deck 9, mid-ship Deck 9, aft
Spa & Salon	8:00am - 10:00pm	Deck 9, forward
High Score	4:00pm - 10:00pm	Deck 10, mid-ship

### Services

Dining Reservations	24 hours - Dial 88	Deck 2, mid-ship
Future Cruises	8:00am - 10:00am (No Appt.) 4:00pm - 8:00pm (By Appt.)	Deck 1, mid-ship
Guest Services	24 hours - Dial 90	Deck 1, mid-ship
Medical Center	8:00am - 10:00am 4:00pm - 6:00pm Dial 911 for emergencies.	A Deck, forward
Room Service	24 hours - Dial 92	
Shore Excursions	4:00pm - 6:00pm	Deck 11, forward
Travel Guide Desk	7:00pm - 8:00pm	Deck 11, forward

### Shopping

Art Gallery	5:00pm - 9:00pm	Deck 2, mid-ship
EFFY Jewelry	5:00pm - 10:30pm	Deck 3, mid-ship
Photo Shop	4:00pm - 10:00pm	Deck 3, aft
The Shops	5:00pm - 10:30pm	Deck 3, mid-ship
Port & Shopping Desk	5:00pm - 6:00pm	Deck 1, mid-ship